



Berkeley School District 87

LONG RANGE PLANNING

Option Refinement 22 JULY 2019

REFINE OPTIONS/VALIDATE COSTS

- Further explore proposed improvement concepts to provide more accurate basis for quantifying costs
- Test fit additions and refine interface to existing buildings
- Understand site development impacts
- Verify unit cost multipliers and affected areas

JEFFERSON PRIMARY and WHITTIER PRIMARY:

Priorities

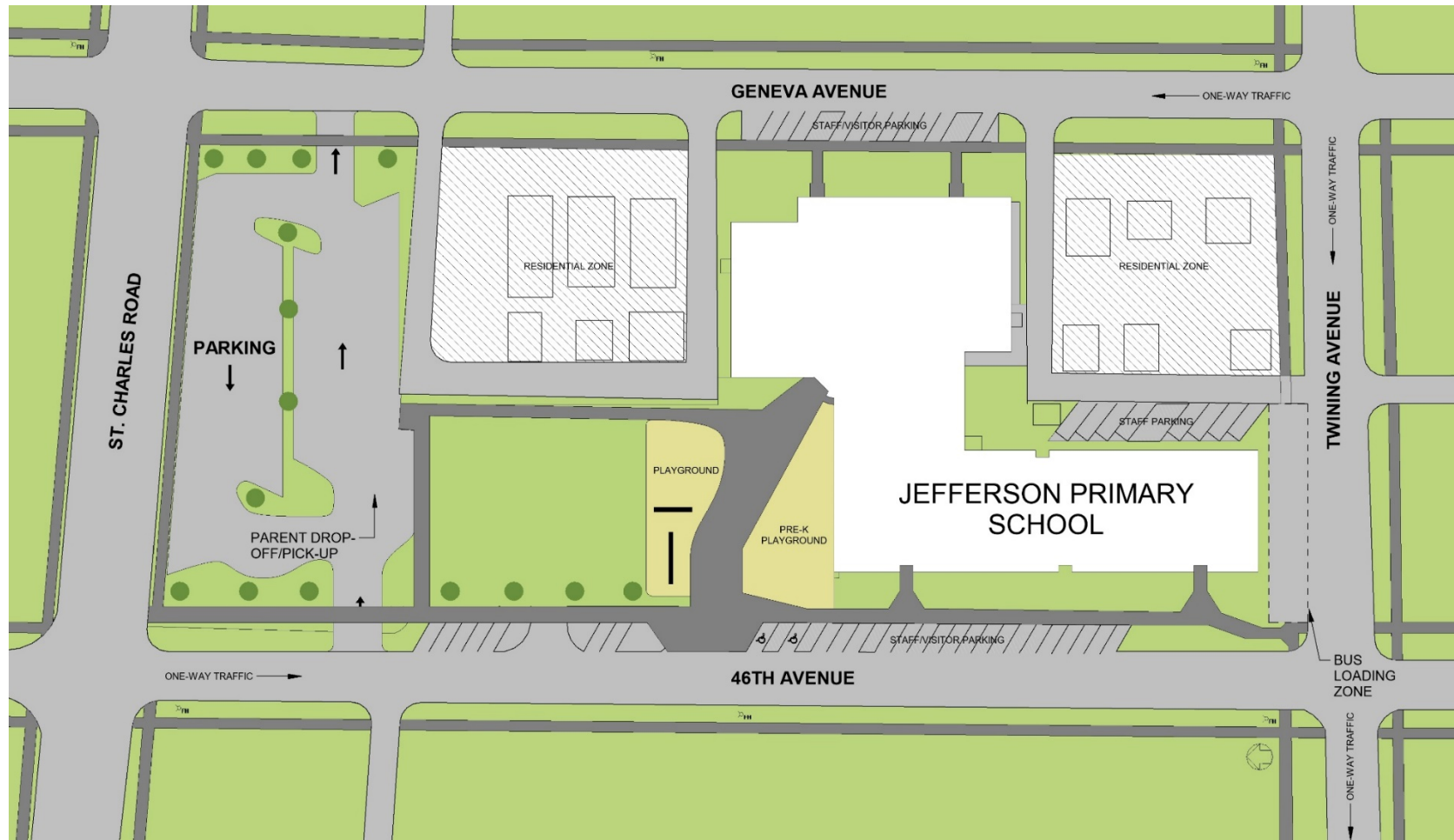
- Improve traffic flow by creating new parking lot and drop-off zones (Jefferson only) - \$2,500,000
- Furniture Replacement (Both Schools) - \$1,200,000

Improvements Subtotal: \$ 3,700,000

- Capital Projects (Both Schools) - \$1,900,000
 - Includes H/LS items



JEFFERSON PRIMARY SITE IMPROVEMENTS



RILEY INTERMEDIATE:

Priorities

- Gym/Cafeteria Addition– \$6,500,000
- STEM/Media Ctr/Small Group Space/Music Room Renovations & Locate office at secure entrance - \$2,510,000
- Repurpose Main Entrance/Restroom upgrades - \$440,000
- Classroom/Corridor Refresh - \$2,882,000

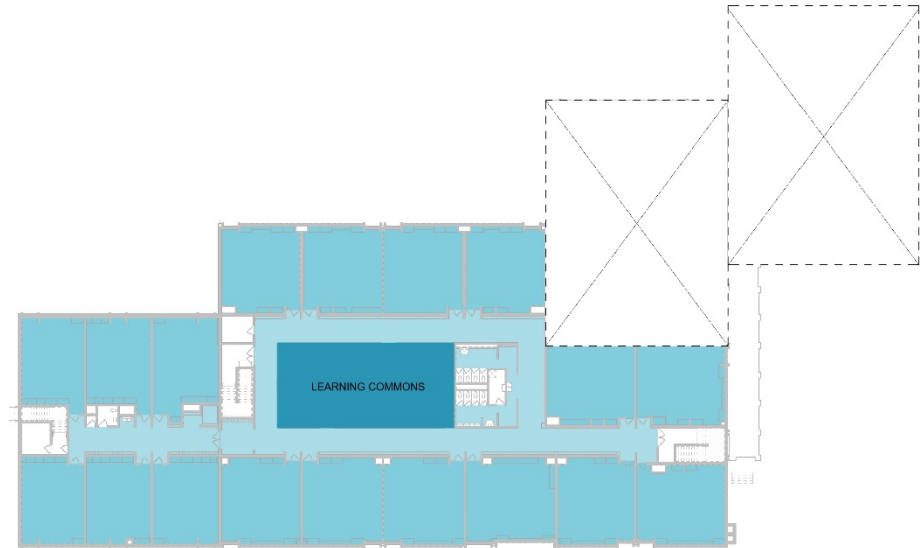
Improvements Subtotal: \$ 12,332,000

- Capital Projects - \$2,724,000
 - Door/Hardware replacement, LED Lighting, Electrical Panel/Feeder Replacement, Galvanized Pipe Replacement, Abatement, includes H/LS items.

RILEY INTERMEDIATE BUILDING IMPROVEMENTS:








MAIN LEVEL



UPPER LEVEL

Impact Legend

	Light Renovation - Corridors	- FINISH UPGRADES
	Light Renovation	- FINISH UPGRADES
	Medium Renovation	- FINISH UPGRADES W/ MINOR MECH/ELEC/STRUCT ADJUSTMENT
	Heavy Renovation	- FULL RENOVATION W/ SIGNIFICANT DEMOLITION AND SYSTEMS IMPACTS
	Addition/New Building	- ADDED SQUARE FOOTAGE WITH NEW OR REPLACED PROGRAM FUNCTIONS



NORTHLAKE MIDDLE:

Priorities

- Multipurpose Addition & Locate Office at Secure Entrance - \$5,562,000
- STEM Lab & Media Center Renovations - \$1,220,000
- Classroom/Corridor Refresh - \$3,240,000
- Science Lab Update - \$440,000

Improvements Subtotal: \$ 10,462,000

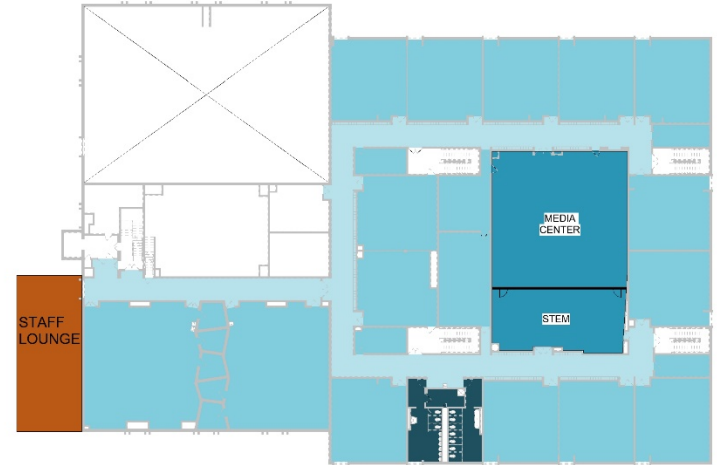
- **Capital Projects - \$7,838,000**
 - Roofing, Door/Hardware replacement, Gym Floor, LED Lighting, Rooftop Air Handlers, Electrical Panel/Feeder Replacement, Bleacher replacement, Galvanized Pipe Replacement, Abatement, includes H/LS items.

Long Range Planning OPTION REFINEMENT

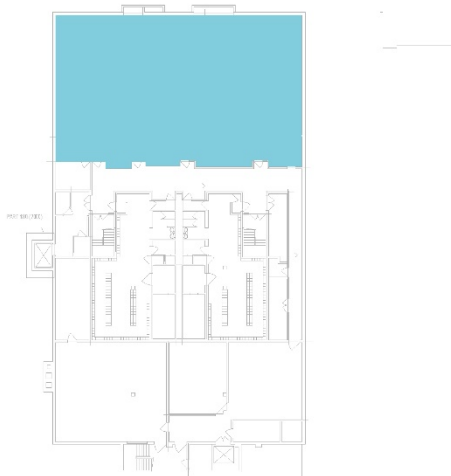
NORTHLAKE MIDDLE BUILDING IMPROVEMENTS:



MAIN LEVEL








UPPER LEVEL



LOWER LEVEL

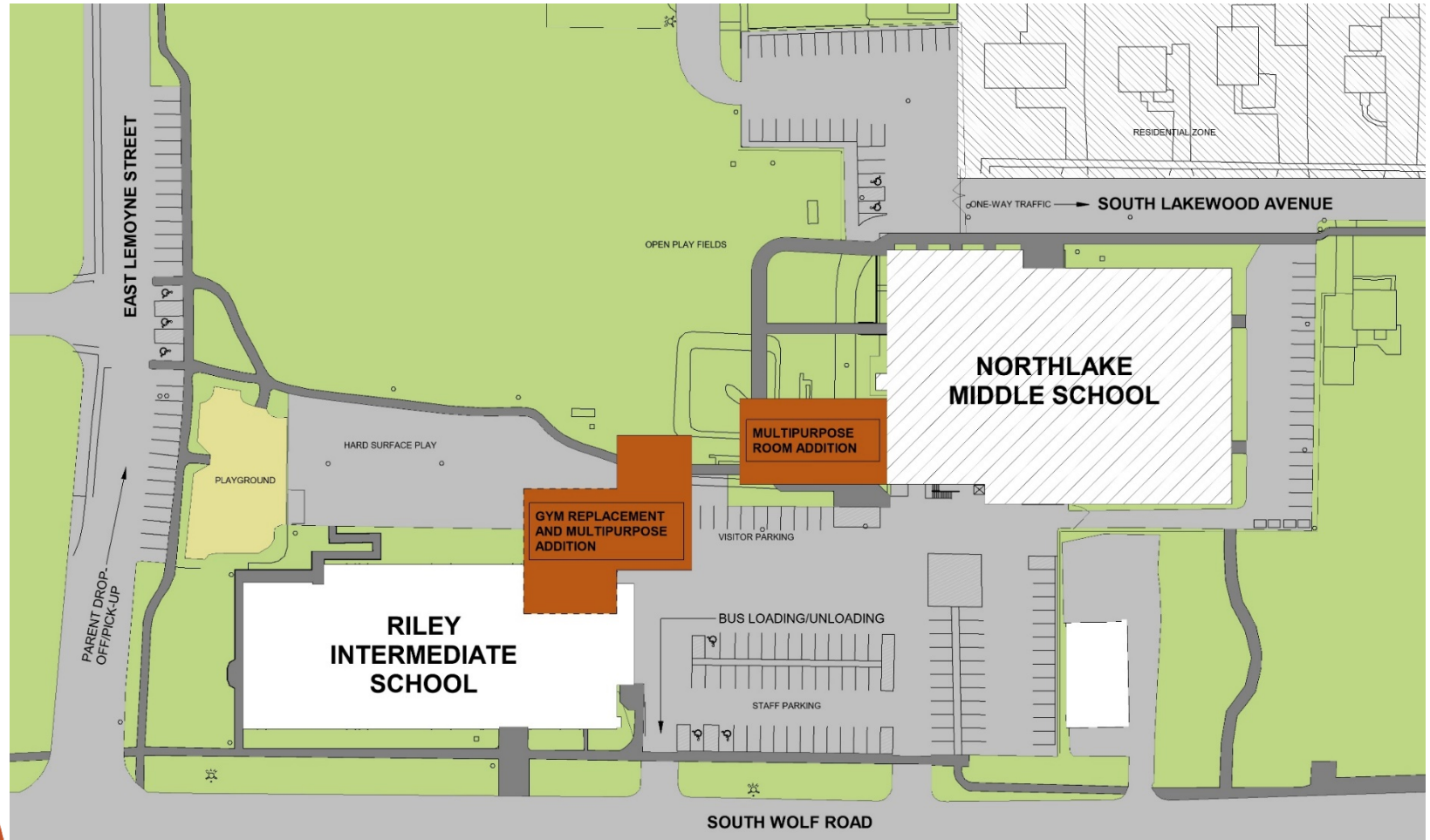
Impact Legend

	Light Renovation - Corridors	- FINISH UPGRADES
	Light Renovation	- FINISH UPGRADES
	Medium Renovation	-FINISH UPGRADES W/ MINOR MECH/ELEC/STRUCT ADJUSTMENT
	Heavy Renovation	-FULL RENOVATION W/ SIGNIFICANT DEMOLITION AND SYSTEMS IMPACTS
	Addition/New Building	-ADDED SQUARE FOOTAGE WITH NEW OR REPLACED PROGRAM FUNCTIONS



Long Range Planning OPTION REFINEMENT

NORTHLAKE AND RILEY SITE IMPROVEMENTS



SUNNYSIDE INTERMEDIATE – OPTION ONE:

Priorities

- Renovations at Specials Classrooms/Learning Commons - \$2,719,000
- Gym/Multipurpose/Office Addition (Locate Office at Secure Entrance) - \$8,726,000
- Renovations to Media Center/Small Group Space - \$520,000
- Classroom/Corridor Refresh - \$2,175,000
- Site: Improve Traffic - \$2,950,000 (with MacArthur)

Improvements Subtotal: \$ 17,090,000

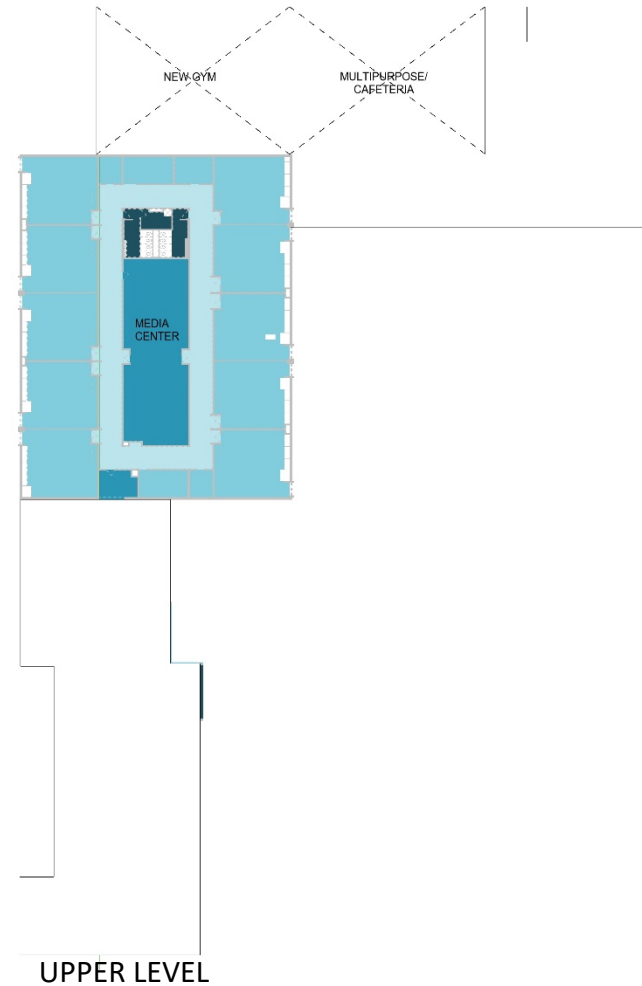
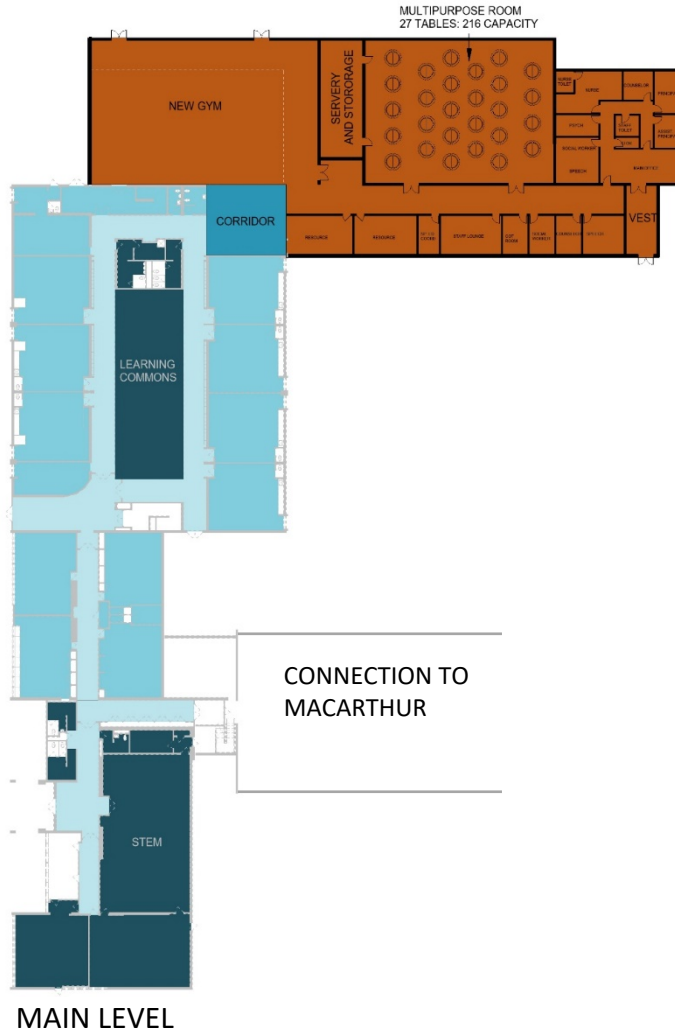
- Capital Projects - \$3,700,000
 - Door/Hardware replacement, LED Lighting, Electrical Panel/Feeder Replacement, Roofing, Abatement, includes H/LS items.

Wold

Overall Estimate: \$ 20,790,000

Long Range Planning OPTION REFINEMENT

SUNNYSIDE INTERMEDIATE – OPTION ONE (BUILDING IMPROVEMENTS):



MACARTHUR MIDDLE - **OPTION ONE:**

Priorities

- STEM Lab & Media Center Lab Renovations - \$1,040,000
- Upgrade Cafeteria, Gym and Locker Rooms - \$3,120,000
- Small Group Space Renovations & Relocate Office to Secure Entrance - \$2,080,000
- Classroom/Corridor Refresh - \$3,172,000






Improvements Subtotal: \$ 9,412,000

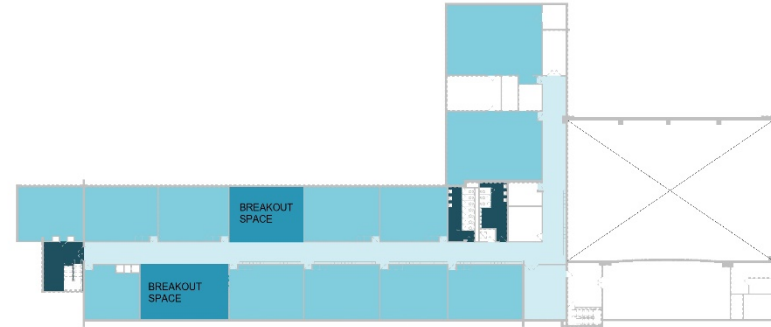
- **Capital Projects - \$6,922,000**
 - Door/Hardware replacement, air handler replacement, Kitchen upgrades, LED lighting, Hydronic pipe loop, Food Service Equipment, moisture infiltration remediation, Roofing, Electrical Panel/Feeder Replacement, includes H/LS items.

Long Range Planning OPTION REFINEMENT

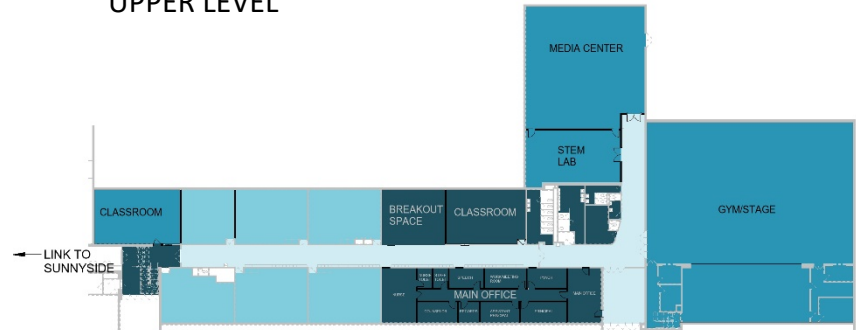
MACARTHUR MIDDLE - OPTION ONE (BUILDING IMPROVEMENTS):

Impact Legend

	Light Renovation - Corridors	- FINISH UPGRADES
	Light Renovation	- FINISH UPGRADES
	Medium Renovation	-FINISH UPGRADES W/ MINOR MECH/ELEC/STRUCT ADJUSTMENT
	Heavy Renovation	-FULL RENOVATION W/ SIGNIFICANT DEMOLITION AND SYSTEMS IMPACTS
	Addition/New Building	-ADDED SQUARE FOOTAGE WITH NEW OR REPLACED PROGRAM FUNCTIONS



UPPER LEVEL



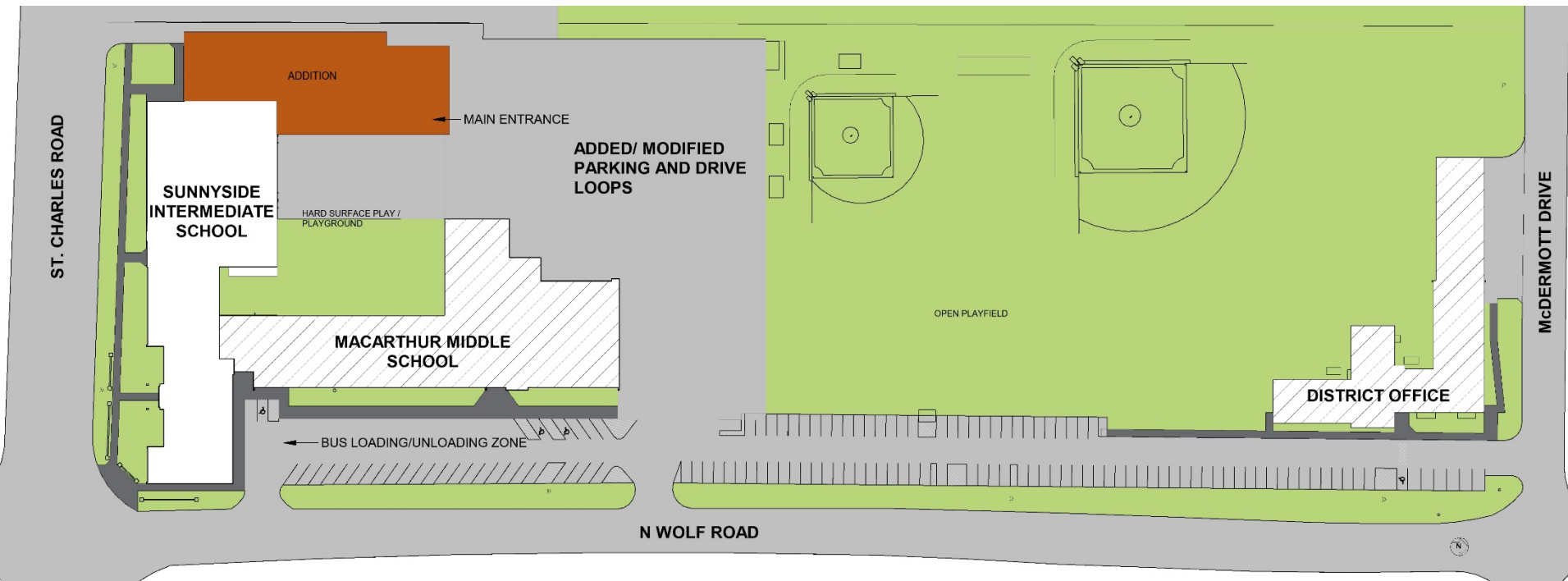
MAIN LEVEL



LOWER LEVEL

Long Range Planning OPTION REFINEMENT

MACARTHUR AND SUNNYSIDE – OPTION ONE (SITE):



SUNNYSIDE INTERMEDIATE – OPTION TWO:

Priorities

- Replace Existing School with New 3-5 Facility of 62,880 sf - \$28,296,000
- Reconfigure Parking, Drives and Play areas - \$1,800,000
- Capacity for 500 Students (125 sf/student)

MACARTHUR MIDDLE – **OPTION TWO:**

Priorities

- STEM Lab & Media Center Lab Renovations - \$1,040,000
- Upgrade Cafeteria, Gym and Locker Rooms - \$3,120,000
- Small Group Space Renovations & relocate Office to Secure Entrance - \$2,080,000
- Gym/Fitness/Locker Addition - \$6,600,000
- Classroom/Corridor Refresh - \$2,475,000
- Site Improvements - \$1,350,000

Improvements Subtotal: \$ 16,665,000

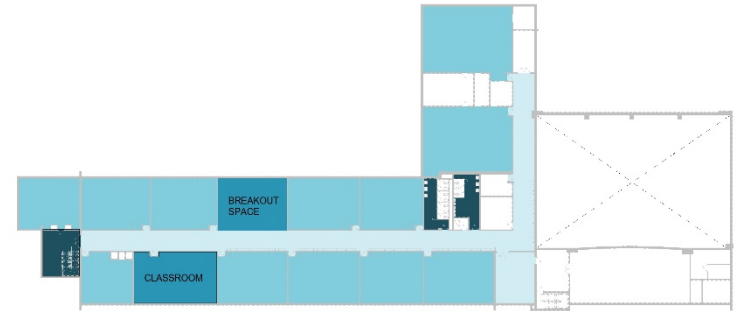
- Capital Projects - \$6,922,000

- Door/Hardware replacement, air handler replacement, Kitchen upgrades, LED lighting, Hydronic pipe loop, Food Service Equipment, moisture infiltration remediation, Roofing, Electrical Panel/Feeder

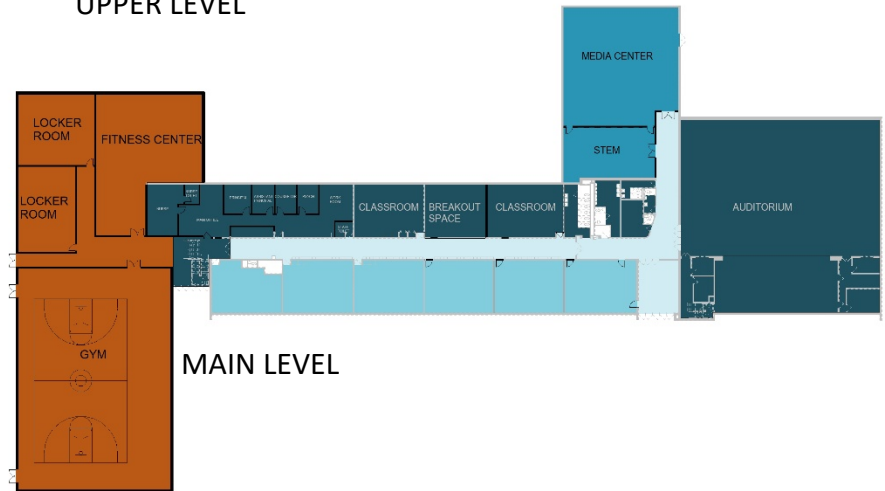
Replacement, includes H/LS items.

Long Range Planning OPTION REFINEMENT

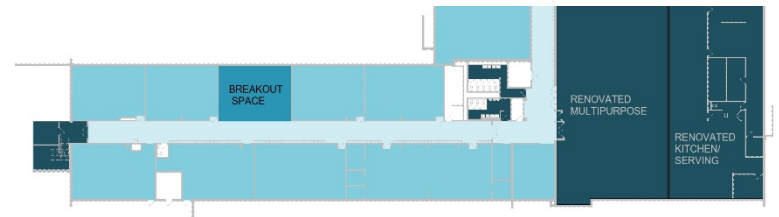
MACARTHUR MIDDLE - OPTION TWO (BUILDING IMPROVEMENTS):



UPPER LEVEL








MAIN LEVEL



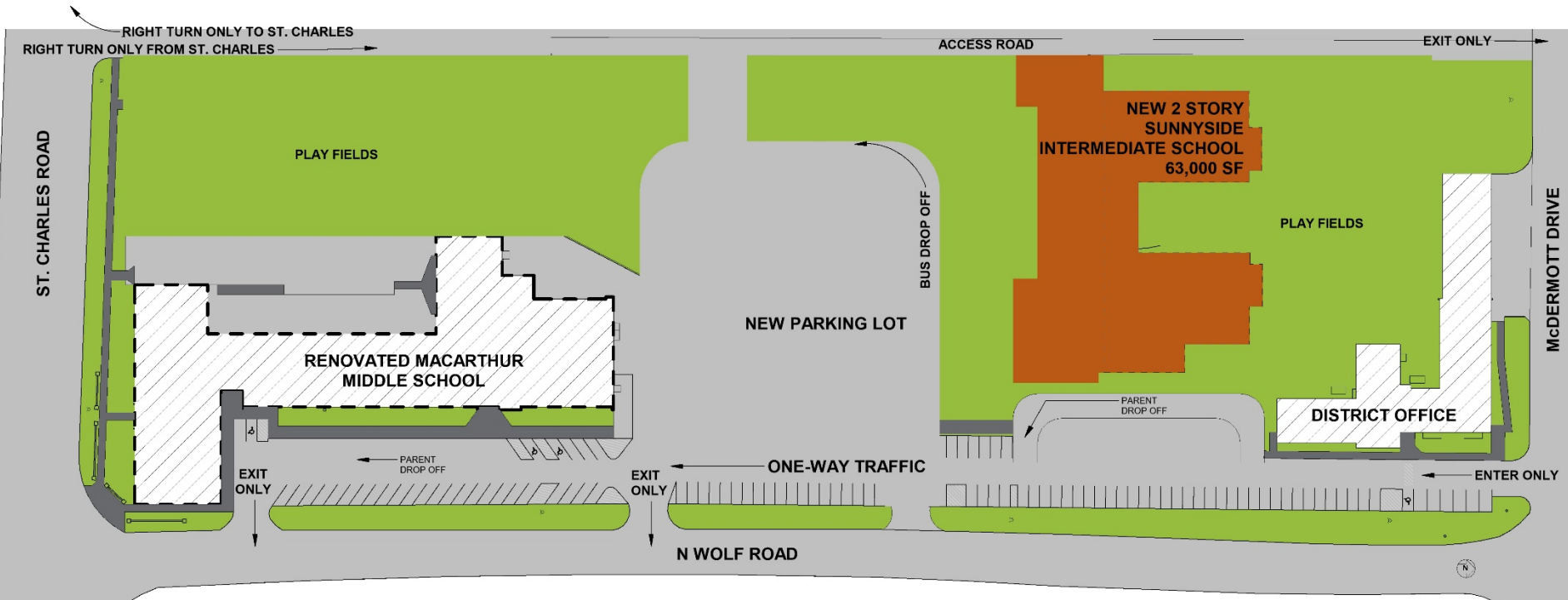
LOWER LEVEL

Impact Legend

	Light Renovation - Corridors	- FINISH UPGRADES
	Light Renovation	- FINISH UPGRADES
	Medium Renovation	-FINISH UPGRADES W/ MINOR MECH/ELEC/STRUCT ADJUSTMENT
	Heavy Renovation	-FULL RENOVATION W/ SIGNIFICANT DEMOLITION AND SYSTEMS IMPACTS
	Addition/New Building	-ADDED SQUARE FOOTAGE WITH NEW OR REPLACED PROGRAM FUNCTIONS

Long Range Planning OPTION REFINEMENT

MACARTHUR AND SUNNYSIDE – OPTION TWO (SITE):



SUNNYSIDE INTERMEDIATE – **OPTION THREE:**

Priorities – (MOVE SUNNYSIDE INTO MACARTHUR)

- STEM Lab & Media Center Lab Renovations - \$1,040,000
- Upgrade Cafeteria, Gym and Locker Rooms - \$3,120,000
- Small Group Space Renovations & Relocate Office to Secure Entrance - \$2,080,000
- Classroom/Corridor Refresh - \$3,172,000

Improvements Subtotal: \$ 9,412,000

- **Capital Projects - \$6,922,000**
 - Door/Hardware replacement, air handler replacement, Kitchen upgrades, LED lighting, Hydronic pipe loop, Food Service Equipment, moisture infiltration remediation, Roofing, Electrical Panel/Feeder Replacement, includes H/LS items.

Wold

Overall Estimate: \$16,334,000

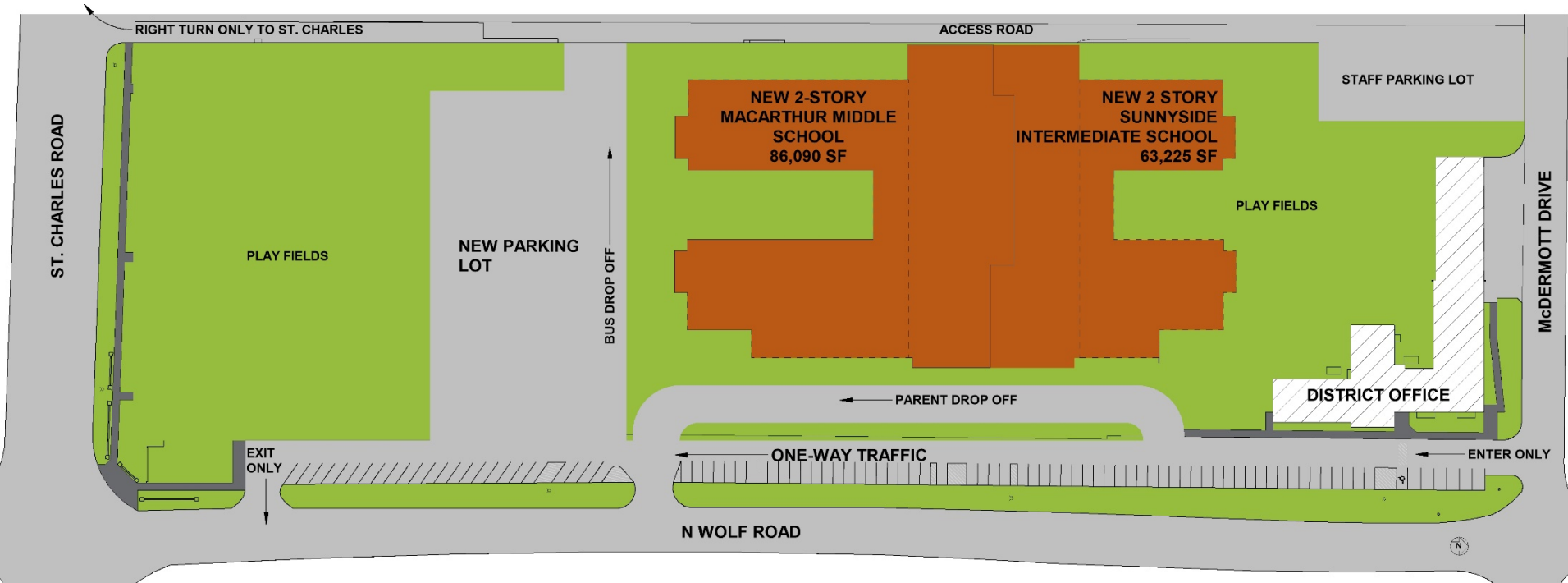
MACARTHUR MIDDLE – OPTION THREE:

Priorities

- Replace Existing School with New 6-8 Facility of 86,090 sf - \$38,740,000
- Reconfigure Parking, Drives and Play areas - \$2,400,000
- Capacity for 500 Students (172 sf/student)

Long Range Planning
OPTION REFINEMENT

MACARTHUR AND SUNNYSIDE – **OPTION THREE (SITE):**



FACILITY IMPROVEMENT PLAN –

SCENARIO ONE:

- JEFFERSON AND WHITTIER PRIMARY PRIORITIES \$ 5,600,000
- RILEY INTERMEDIATE PRIORITIES \$ 15,056,000
- NORTHLAKE MIDDLE PRIORITIES \$ 18,300,000
- SUNNYSIDE INTERMEDIATE PRIORITIES \$ 20,790,000
OPTION ONE – (RENOVATE/ADD)
- MACARTHUR MIDDLE PRIORITIES \$ 16,334,000
OPTION ONE – (RENOVATE)

FACILITY IMPROVEMENT PLAN –

SCENARIO TWO:

- JEFFERSON AND WHITTIER PRIMARY PRIORITIES \$ 5,600,000
- RILEY INTERMEDIATE PRIORITIES \$ 15,056,000
- NORTHLAKE MIDDLE PRIORITIES \$ 18,300,000
- SUNNYSIDE INTERMEDIATE PRIORITIES \$ 30,096,000
OPTION TWO – (NEW SCHOOL)
- MACARTHUR MIDDLE PRIORITIES \$ 23,587,000
OPTION TWO – (RENOVATE/ADD)

FACILITY IMPROVEMENT PLAN –

SCENARIO THREE:

- JEFFERSON AND WHITTIER PRIMARY PRIORITIES \$ 5,600,000
- RILEY INTERMEDIATE PRIORITIES \$ 15,056,000
- NORTHLAKE MIDDLE PRIORITIES \$ 18,300,000
- SUNNYSIDE INTERMEDIATE PRIORITIES \$ 30,096,000
OPTION TWO – (NEW SCHOOL)
- MACARTHUR MIDDLE PRIORITIES \$ 41,140,000
OPTION THREE – (NEW SCHOOL)

FACILITY IMPROVEMENT PLAN –

SCENARIO FOUR:

- JEFFERSON AND WHITTIER PRIMARY PRIORITIES \$ 5,600,000
- RILEY INTERMEDIATE PRIORITIES \$ 15,056,000
- NORTHLAKE MIDDLE PRIORITIES \$ 18,300,000
- SUNNYSIDE INTERMEDIATE PRIORITIES \$ 16,334,000
OPTION THREE – (MOVE TO MACARTHUR)
- MACARTHUR MIDDLE PRIORITIES \$ 41,140,000
OPTION THREE – (NEW SCHOOL)

Berkeley School District 87

QUESTIONS

LONG RANGE PLANNING

Option Refinement 22 JULY 2019

